

Eastern WVCTC Annual Report



2014-2015

Educating Hometown Heroes.



Foundation

July 1, 2014– June 30, 2015 Foundation Donors & Gifts

Adamski, Marilyn

American Association of Community Colleges

Becker-Gorby, Sherry

Carson, Richard

Claude Worthington Benedum Foundation

Coleman Foundation

Dominion Foundation

Hardy County Professional Educators

Harvey, Susan

Hollinger, Dennis

Kesecker, Ed

National Association for Community College Entrepreneurship

Nelson, Albert and Nellie

Rinier, Mark

See, Barbara

Shentel Foundation

Terrell, Charles D.

VanMeter, Marie

Yokum, Laura



6.7 %

Growth in Credit Enrollment

1,127

Annual Headcount



26.7 %

Percent of Graduates Pursuing Bachelors |
Highest in System



EASTERN
West Virginia Community & Technical College

“Hometown Heroes”


I get emotional when I see a returning soldier coming home from active duty. Many are greeted as hometown heroes, because of the sacrifices they made to protect our freedom. It is a great community moment and celebration when they safely return back home to all of us. It is also an opportunity to recognize Veterans who previously served our communities, state and nation.

There are other hometown heroes that work and live in our communities -our law enforcement, fire and rescue personnel. They dedicate many hours to protect and serve us. A big thanks for their contributions!

And, I am very proud of the hometown heroes we have at Eastern -our administrators, faculty, staff and students. Eastern faculty and staff are dedicated to helping students achieve success. It is equally an emotional moment for me when Eastern students walk on stage to accept a certificate and/or degree. It is a great celebration that reflects a new beginning in their lives.

The FY 15 Annual Report recognizes another kind of hero, the donors who give to Eastern's Foundation. Gifts received include student scholarships, equipment, special initiatives and unrestricted funding. On behalf of the Board of Governors, faculty, staff, administrator and students, thank you to the heroes who support Eastern's mission.

Finally, I would like to speak to the other heroes of our community - the new student and/or returning student. Merriam-Webster's dictionary defines a hero as “a person who is admired for great or brave acts or fine qualities.” I believe it takes courage and commitment when an individual makes a decision to attend Eastern. Many of our students balance family, work and other responsibilities when they make a commitment to enroll and take classes. All of the students enrolled at Eastern are our heroes!



Charles “Chuck” Terrell
President/”Head Coach”

Mission

Eastern provides accessible and affordable educational opportunities for academic, technical, workforce training and life-long learning for the Potomac Highlands regional community.

Vision

Eastern West Virginia Community and Technical College enriches the Potomac Highlands regional community through a range of innovative programs and services that exemplify community college values and achieve the community college mission.

Values

In its institutional attitudes, policies, practices, and activities, Eastern West Virginia Community and Technical College is committed to:

Opportunity

- Education is accessible, by geographic location or delivery through technology, and affordable to residents throughout the College's region of responsibility.
- The College maintains an open door admission policy.
- All learners are accepted and valued; diverse students are sought, welcomed, and provided a nurturing environment.
- Student support services assure opportunity through student-friendly intake and orientation activities, timely provision of financial aid, and positive interaction from initial contact with students through achievement of their goals.

Quality Teaching and Lifelong Learning

- Academic offerings meet the needs of students for learning skills, for career related education and training, and for personal growth.
- The College celebrates and promotes lifelong learning by providing learning opportunities that are relevant to all students.
- Learner-centered instruction recognizes different learning styles and is supported by use of appropriate technology.
- The results of continuous learning outcomes assessment improve instruction, focus and drive faculty development, and ensure that teaching and learning is relevant and of high quality.

Integrity

- The College is open and honest in its relations with students, employees, and its partners.
- The College confirms the community college mission as its central purpose.
- The College affirms that all employees contribute to institutional mission accomplishment, either by teaching or by supporting teaching and learning.
- The College rewards initiative, creativity, and teamwork in the positive resolution of institutional problems and advancement of a common organizational agenda.
- The College models its commitment to diversity in all areas of its institutional life—students, employees, governance, and supportive entities and relationships.
- In its operations and activities, the College demonstrates financial responsibility and accountability.

Partnerships

- The College promotes a broad sense of community that breaks down barriers and encourages collaborative attitudes and action.
- The College collaborates and partners with public schools, other educational providers, business and industry, labor, government, and arts and cultural organizations to serve students, support economic and community development, and enhance opportunities for cultural growth.
- In its teaching and learning and its learner support activities, the College recognizes and promotes student awareness and knowledge of regional, national, and global interdependence.
- Continuous Improvement
- The College continuously assesses its policies and practices and scans the external environment to ground its planning and to improve institutional efficiency and effectiveness.
- The College encourages and supports employees' efforts to improve job skills, to maintain technological currency, and to develop professionally.
- The College procures and effectively applies technology to its operations and processes.

“I think a hero is any person really intent on making this a better place for all people” - Maya Angelou

West Virginia Council for CTC Education

Clarence Pennington, Chair
Robert Lee Brown, Vice Chair
William Baker, Secretary
Bruce Berry
Keith Burdette
Christina Cameron
Dr. Kathy J. D'Antoini
John Panza
Steve Roberts
John Sorrenti

Eastern West Virginia Community & Technical College

Board of Governors - Fiscal Year 2017

Rob Tissue, Chair
Scott Staley, Vice-chair
Dixie Bean
Jr Helmick
Theda May (Student rep.)
Douglas Lambert
Melinda Chambers
Faron Shanholtz
Laurel Godlove (Classified Staff rep.)
George Sponaugle
Greg Greenwalt
Curtis Hakala (Faculty rep.)

Administrators - Fiscal Year 2017

Charles Terrell, President
Penny Reardon, Executive Dean of Finance and Operation Services
Ron Hamilton, Chief Information Officer
Briana LaVorgna, Dean of Community Outreach and Engagement
Monica Wilson, Dean of Student Success
Debra Backus, Dean of Teaching and Learning
Sherry Watts, Associate Dean of Workforce Education



Key Figures

This section of Eastern West Virginia Community and Technical College's Annual Report to the Community addresses the major initiatives, challenges, and accomplishments achieved during the past academic and fiscal year. This report also presents discussions and data about the financial position of the college.

Annual Headcount	2010	2011	2012	2013	2014	1 year % Change	5 year % Change
Blue Ridge Community and Technical College	5,195	5,949	5,888	6,172	6,451	4.5%	24.2%
BridgeValley Community and Technical College*	3,326	.	.
Bridgemont Community and Technical College	1,167	1,231	1,266	1,503	.	.	.
Kanawha Valley Community and Technical College	2,511	2,241	2,113	2,117	.	.	.
Eastern WV Community and Technical College	862	1,022	1,101	1,143	1,129	-1.2%	31.0%
Mountwest Community and Technical College	4,186	4,168	4,120	3,537	3,073	-13.1%	-26.6%
New River Community and Technical College	4,268	4,682	4,315	3,885	2,879	-25.9%	-32.5%
Pierpont Community and Technical College	3,969	4,060	3,927	3,450	2,883	-16.4%	-27.4%
Southern WV Community and Technical College	3,131	3,002	2,747	2,456	2,286	-6.9%	-27.0%
WV Northern Community College	5,877	4,537	3,774	3,106	2,831	-8.9%	-51.8%
WVU at Parkersburg	5,691	5,611	5,072	4,341	3,894	-10.3%	-31.6%
TOTAL	36,857	36,503	34,323	31,710	28,752	-9.3%	-22.0%

**+31% Annual
Enrollment
Change Over 5 yrs**

Credit Headcount	2010	2011	2012	2013	2014	1 year % Change	5 year % Change
Blue Ridge Community and Technical College	3,874	4,353	4,374	5,015	5,526	10.2%	42.6%
BridgeValley Community and Technical College*	2,336	.	.
Bridgemont Community and Technical College	928	1,017	1,062	1,149	.	.	.
Kanawha Valley Community and Technical College	1,949	1,714	1,601	1,591	.	.	.
Eastern WV Community and Technical College	638	773	802	856	913	6.7%	43.1%
Mountwest Community and Technical College	3,126	3,111	2,608	2,257	2,026	-10.2%	-35.2%
New River Community and Technical College	3,016	3,127	2,997	2,678	2,080	-22.3%	-31.0%
Pierpont Community and Technical College	3,000	3,038	2,926	2,703	2,314	-14.4%	-22.9%
Southern WV Community and Technical College	2,565	2,457	2,177	2,002	1,838	-8.2%	-28.3%
WV Northern Community College	3,510	3,084	2,529	2,177	1,932	-11.3%	-45.0%
WVU at Parkersburg	4,448	4,301	3,923	3,468	3,021	-12.9%	-32.1%
TOTAL	27,054	26,975	24,999	23,896	21,986	-8.0%	-18.7%

**+43.1% Credit
Headcount
Change Over 5 yr
System Average**

	2010	2011	2012	2013	2014	1 year % Change	5 year % Change
Blue Ridge Community and Technical College	1,497	1,712	1,711	1,901	2,054	8.0%	37.2%
BridgeValley Community and Technical College*	799	.	.
Bridgemont Community and Technical College	283	337	296	256	.	.	.
Kanawha Valley Community and Technical College	886	799	750	722	.	.	.
Eastern WV Community and Technical College	230	288	285	293	282	-3.8%	22.6%
Mountwest Community and Technical College	1,437	1,467	1,074	914	770	-15.8%	-46.4%
New River Community and Technical College	1,204	1,250	1,251	1,000	800	-20.0%	-33.6%
Pierpont Community and Technical College	870	884	798	684	460	-32.7%	-47.1%
Southern WV Community and Technical College	647	575	612	530	412	-22.3%	-36.3%
WV Northern Community College	1,315	1,107	887	724	592	-18.2%	-55.0%
WVU at Parkersburg	1,645	1,601	1,336	1,143	942	-17.6%	-42.7%
Total	10,014	10,020	9,000	8,167	7,111	-12.9%	-29.0%

**+22.6% Adult
Credit Enrollment
Change Over 5 yrs**

Highest Percentage
Change of Students
Entering Bachelor's
Programs the
Following Fall
across entire
WVCTC System

Number of Community College Students Entering Bachelor's Programs the Following Fall

	2009	2010	2011	2012	2013	2012-2013 % Change	2009-2013 % Change
Blue Ridge Community and Technical College	121	130	146	133	146	9.8%	20.7%
BridgeValley Community and Technical College*
Bridgemont Community and Technical College	62	49	56	38	27	-28.9%	-56.5%
Kanawha Valley Community and Technical College	485	172	130	90	117	30.0%	-75.9%
Eastern WV Community and Technical College	15	16	30	15	19	26.7%	26.7%
Mountwest Community and Technical College	208	122	129	91	70	-23.1%	-66.3%
New River Community and Technical College	158	156	173	137	125	-8.8%	-20.9%
Pierpont Community and Technical College	254	245	269	253	223	-11.9%	-12.2%
Southern WV Community and Technical College	184	133	113	107	121	13.1%	-34.2%
WV Northern Community College	139	126	117	88	85	-3.4%	-38.8%
WVU at Parkersburg	659	671	689	673	637	-5.3%	-3.3%
TOTAL	2,285	1,820	1,852	1,625	1,570	-3.4%	-31.3%

Number of Skill Enhancement, Skill Set, and Advanced Skill Set Completers

	2013-14			2014-15			1 year % Change		
	Skill Enhancement	Skill Set	Advanced Skill Set	Skill Enhancement	Skill Set	Advanced Skill Set	Skill Enhancement	Skill Set	Advanced Skill Set
Blue Ridge Community and Technical College	1,856	5,298	70	1,964	3,417	55	5.8%	-35.5%	-21.4%
BridgeValley Community and Technical College*	.	.	.	1362	475	65	.	.	.
Bridgemont Community and Technical College	378	1,352	0
Kanawha Valley Community and Technical College	384	216	63
Eastern WV Community and Technical College	734	396	50	616	339	68	-16.1%	-14.4%	36.0%
Mountwest Community and Technical College	123	349	307	114	206	0	-7.3%	-41.0%	-100.0%
New River Community and Technical College	122	188	31	220	115	22	80.3%	-38.8%	-29.0%
Pierpont Community and Technical College	658	808	143	265	510	102	-59.7%	-36.9%	-28.7%
Southern WV Community and Technical College	3,138	880	0	1,471	521	0	-53.1%	-40.8%	.
WV Northern Community College	1,940	156	0	15	170	6	-99.2%	9.0%	.
WVU at Parkersburg	1,164	163	70	1,116	154	51	-4.1%	-5.5%	-27.1%
TOTALS	10,497	9,806	734	7,143	5,907	369	-32.0%	-39.8%	-49.7%

**+36% Growth of
Advanced Skill
Set Completers
(Workforce)**

Student Success Rate

	2005	2006	2007	2008	2009
Blue Ridge Community and Technical College	43.3%	40.4%	32.4%	37.1%	33.6%
BridgeValley Community and Technical College*
Bridgemont Community and Technical College	38.2%	41.6%	34.5%	44.5%	29.4%
Kanawha Valley Community and Technical College	25.5%	18.4%	26.1%	23.6%	31.1%
Eastern WV Community and Technical College	17.6%	21.7%	22.0%	35.1%	26.5%
Mountwest Community and Technical College	33.6%	34.0%	34.6%	36.3%	29.4%
New River Community and Technical College	38.9%	32.8%	32.0%	29.7%	25.7%
Pierpont Community and Technical College	36.6%	38.0%	37.0%	36.9%	33.2%
Southern WV Community and Technical College	30.7%	35.6%	33.9%	35.6%	33.5%
WV Northern Community College	28.4%	34.0%	28.7%	27.0%	23.7%
WVU at Parkersburg	33.2%	30.9%	31.6%	35.1%	28.7%
TOTAL	33.2%	33.5%	32.4%	33.6%	29.5%

Eastern began offering more workforce for credit; therefore students are gaining a job skill to successfully enter the workforce; thus, fewer are achieving the system defined benchmarks for "student success" which are based on completing a certificate, associate degree, or transferring to a four year institution.

EASTERN WEST VIRGINIA COMMUNITY AND TECHNICAL COLLEGE

STATEMENTS OF NET POSITION JUNE 30, 2014 AND 2013

	<u>2014</u>	<u>2013</u>
ASSETS AND DEFERRED OUTFLOWS		
CURRENT ASSETS:		
Cash and cash equivalents	\$ 4,421,829	\$ 2,475,374
Accounts receivable, net of allowance for doubtful accounts	275,753	86,140
Prepaid assets	3,750	-
Total current assets	<u>4,701,332</u>	<u>2,561,514</u>
NONCURRENT ASSETS:		
Cash and cash equivalents	358,331	313,759
Capital assets, net of accumulated depreciation	8,376,899	8,389,045
Total noncurrent assets	<u>8,735,230</u>	<u>8,702,804</u>
DEFERRED OUTFLOWS OF RESOURCES:		
Total deferred outflows of resources	<u>-</u>	<u>-</u>
TOTAL	\$ 13,436,562	\$ 11,264,318
LIABILITIES, DEFERRED INFLOWS, AND NET POSITION		
CURRENT LIABILITIES:		
Accounts payable	\$ 24,433	\$ 80,472
Amount due to the Commission	13,182	12,103
Accrued liabilities and deposits	132,093	90,173
Compensated absences — current portion	97,595	90,669
Unearned revenue	388,614	258,029
Total current liabilities	<u>655,917</u>	<u>531,446</u>
NONCURRENT LIABILITIES:		
Compensated absences	45,929	28,577
Other post employment benefits liability	593,177	571,390
Funds due to West Virginia Development Office	2,619,932	619,932
Total noncurrent liabilities	<u>3,259,038</u>	<u>1,219,899</u>
DEFERRED INFLOWS OF RESOURCES:		
Total deferred inflows of resources	<u>-</u>	<u>-</u>
NET POSITION:		
Net investment in capital assets	7,756,967	7,769,113
Restricted for - expendable - capital projects	361,141	315,134
Unrestricted	1,403,499	1,428,726
Total net position	<u>9,521,607</u>	<u>9,512,973</u>
TOTAL	\$ 13,436,562	\$ 11,264,318

EASTERN WEST VIRGINIA COMMUNITY AND TECHNICAL COLLEGE

STATEMENTS OF REVENUES, EXPENSES, AND CHANGES IN NET POSITION YEARS ENDED JUNE 30, 2014 AND 2013

	<u>2014</u>	<u>2013</u>
OPERATING REVENUES:		
Student tuition and fees — net of scholarship allowance of \$801,309 and \$708,783 in 2014 and 2013, respectively	\$ 932,820	\$ 876,894
Contracts and grants:		
Federal	125,625	-
State	1,202,432	1,175,400
Private	14,143	8,704
Sales and services of educational activities	5,490	558
Miscellaneous	13,455	11,403
Total operating revenues	<u>2,293,965</u>	<u>2,072,959</u>
OPERATING EXPENSES:		
Salaries and wages	2,302,096	2,151,155
Benefits	520,807	472,982
Supplies and other services	1,599,035	1,522,842
Rent	103,739	101,546
Utilities	99,322	101,011
Student financial aid — scholarships	997,911	1,151,019
Depreciation	513,710	500,513
Fees assessed by the Commission for operations	16,493	14,265
Total operating expenses	<u>6,153,113</u>	<u>6,015,333</u>
OPERATING LOSS	<u>(3,859,148)</u>	<u>(3,942,374)</u>
NONOPERATING REVENUES:		
State appropriations	1,924,011	2,100,509
Federal Pell grants	1,799,220	1,859,802
Investment income	6,056	3,934
Total nonoperating revenues	<u>3,729,287</u>	<u>3,964,245</u>
INCREASE (DECREASE) IN NET POSITION BEFORE OTHER REVENUES, EXPENSES, GAINS, OR LOSSES	<u>(129,861)</u>	<u>21,871</u>
CAPITAL PAYMENTS MADE AND EXPENSES INCURRED ON BEHALF OF THE COLLEGE	<u>138,495</u>	<u>-</u>
INCREASE IN NET POSITION	<u>8,634</u>	<u>21,871</u>
NET POSITION - Beginning of year	<u>9,512,973</u>	<u>9,491,102</u>
NET POSITION - End of year	<u>\$ 9,521,607</u>	<u>\$ 9,512,973</u>

EASTERN WEST VIRGINIA COMMUNITY AND TECHNICAL COLLEGE

STATEMENTS OF CASH FLOWS YEARS ENDED JUNE 30, 2014 AND 2013

	<u>2014</u>	<u>2013</u>
CASH FLOWS FROM OPERATING ACTIVITIES:		
Student tuition and fees	\$ 906,266	\$ 893,702
Contracts and grants	1,314,297	1,076,608
Payments to and on behalf of employees	(2,742,777)	(2,598,977)
Payments to suppliers	(1,615,525)	(1,596,552)
Payments to utilities	(206,737)	(219,920)
Payments for scholarships	(986,752)	(1,226,961)
Sales and service of educational activities	1,074	2,882
Fees retained by the Commission	(16,493)	(14,265)
Other (payments) receipts, net	(28,179)	50,376
Net cash used in operating activities	<u>(3,374,826)</u>	<u>(3,633,116)</u>
CASH FLOWS FROM NONCAPITAL FINANCING ACTIVITIES:		
State appropriations	1,924,011	2,106,372
Federal Pell grants	1,799,220	1,859,802
Federal Direct Loan Program — direct lending receipts	1,145,566	1,061,502
Federal Direct Loan Program — direct lending payments	(1,145,566)	(1,061,502)
Net cash provided by noncapital financing activities	<u>3,723,231</u>	<u>3,966,174</u>
CASH FLOWS FROM CAPITAL FINANCING ACTIVITIES:		
Loan proceeds from West Virginia Development Office	2,000,000	-
Capital project proceeds from the Commission	110,628	-
Purchases of capital assets	(473,697)	(200,222)
Draws from noncurrent cash and cash equivalents	2,284	2,832
Deposits to noncurrent cash and cash equivalents	(46,856)	(53,113)
Net cash provided by (used in) capital financing activities	<u>1,592,359</u>	<u>(250,503)</u>
CASH FLOWS FROM INVESTING ACTIVITIES:		
Interest on investments	<u>5,691</u>	<u>4,071</u>
Net cash provided by investing activities	<u>5,691</u>	<u>4,071</u>
INCREASE IN CASH AND CASH EQUIVALENTS	<u>1,946,455</u>	<u>86,626</u>
CASH AND CASH EQUIVALENTS - Beginning of year	<u>2,475,374</u>	<u>2,388,748</u>
CASH AND CASH EQUIVALENTS - End of year	<u>\$ 4,421,829</u>	<u>\$ 2,475,374</u>
RECONCILIATION OF OPERATING LOSS TO NET CASH USED IN OPERATING ACTIVITIES:		
Operating loss	\$ (3,859,148)	\$ (3,942,374)
Adjustments to reconcile operating loss to net cash used in operating activities:		
Depreciation expense	513,710	500,513
Changes in assets and liabilities:		
Accounts receivable, net	(189,248)	117,791
Prepaid expenses	(3,750)	125
Accounts payable	(62,039)	(107,924)
Due to Commission/Council	7,079	(14,114)
Accrued liabilities and deposits	41,920	2,975
Other postemployment benefits liability	21,787	17,143
Compensated absences	24,278	(1,029)
Unearned revenue	130,585	(206,222)
Net cash used in operating activities	<u>\$ (3,374,826)</u>	<u>\$ (3,633,116)</u>
Noncash transactions:		
Capital expenditures in accounts payable	<u>\$ 27,867</u>	<u>\$ 11,460</u>

EASTERN WEST VIRGINIA COMMUNITY AND TECHNICAL COLLEGE

MANAGEMENT DISCUSSION AND ANALYSIS YEAR ENDED JUNE 30, 2014

Financial Highlights:

Cash flows used in operating activities decreased by \$258,290 in fiscal year 2014 from the previous year. Cash flow from grants and contracts had an increase of \$237,689 from fiscal 2013 to fiscal 2014 due to an increase in grants and contracts received by the College. Cash flows for payments to and on behalf of employees increased by \$143,800 in fiscal 2014 as compared to fiscal 2013 as a result of the increase in the wages and increased staffing.

Cash flows from noncapital financing activities decreased by \$242,943 in fiscal year 2014 as compared to fiscal year 2013. This is as a result of decreases in 2014 in State Appropriation of \$182,361.

Cash flows from capital financing activities increased in fiscal year 2014 from fiscal year 2013 by \$1,842,862 as a result of funding for the wing.

Cash flows from investing activities increased in fiscal year 2014 from fiscal year 2013 by \$1,620. This increase was due to earning more interest on investments.

Overall cash increased by \$1,946,455 in fiscal year 2014 as compared to fiscal year 2013.

Capital Activity

The College has agreements with the West Virginia Development Office (WVDO) totaling \$619,932. These funds were used to construct a new sewer system and access road for the College's new facility. The College will repay the WVDO "if non-operating funds become available" or "when an appropriate non-operating income stream is established" or "if the College sells or disposes of the two acres of property." The amount owed to the WVDO, in the event that one of the two previous conditions are met, is recorded as a noncurrent liability in the Statement of Net Position.

Eastern awarded a contract to Harbel Construction, Inc, to construct a new wing in June 2014. The project is for a 7,500 square foot wing to accommodate additional classroom space. The total project will cost approximately \$3,000,000. A \$2,000,000 financial assistance agreement was entered into with WVDO to finance the project. It is anticipated that this expansion project will be completed by Spring 2015.

Economic Outlook

The College implemented a revised tuition rate of \$112 for fiscal year 2014. Fiscal year 2014 year to date actual tuition and fees revenue totaled \$932,820 (net of scholarship allowance). With state appropriations being reduced by 7.5%, the Board of Governors submitted a request to West Virginia Council for Community and Technical College Education to increase the tuition rate to \$120 effective Fall 2015. The increase was approved. Anticipated enrollment growth and the increased tuition rate will generate additional tuition and fees revenue to support academic and workforce education programs and services.

Stats and Facts

Gender Profile

Female: 69.6%

Male: 30.4%



Gender	2011	2012	2013	2014	2015	2014-2015 % Change	2011-2015 % Change
Female	566	579	636	669	625	-6.6%	10.4%
Male	207	223	220	244	273	11.9%	31.9%

Age Profile

17 or Less

18 to 24

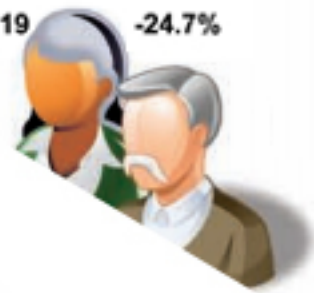
25 to 44

45 and Older



#	% Change from last fall
236	59.5%
294	-9.3%
249	-11.7%
119	-24.7%

Age Group	2011	2012	2013	2014	2015	2014-2015 % Change	2011-2015 % Change
17 and Under	120	113	135	148	236	59.5%	96.7%
18 to 24	268	264	300	324	294	-9.3%	9.7%
25 to 44	288	285	293	282	249	-11.7%	-13.5%
45 and Over	97	140	128	158	119	-24.7%	22.7%
Age Unknown	.	.	.	1	.	.	.



Program Level

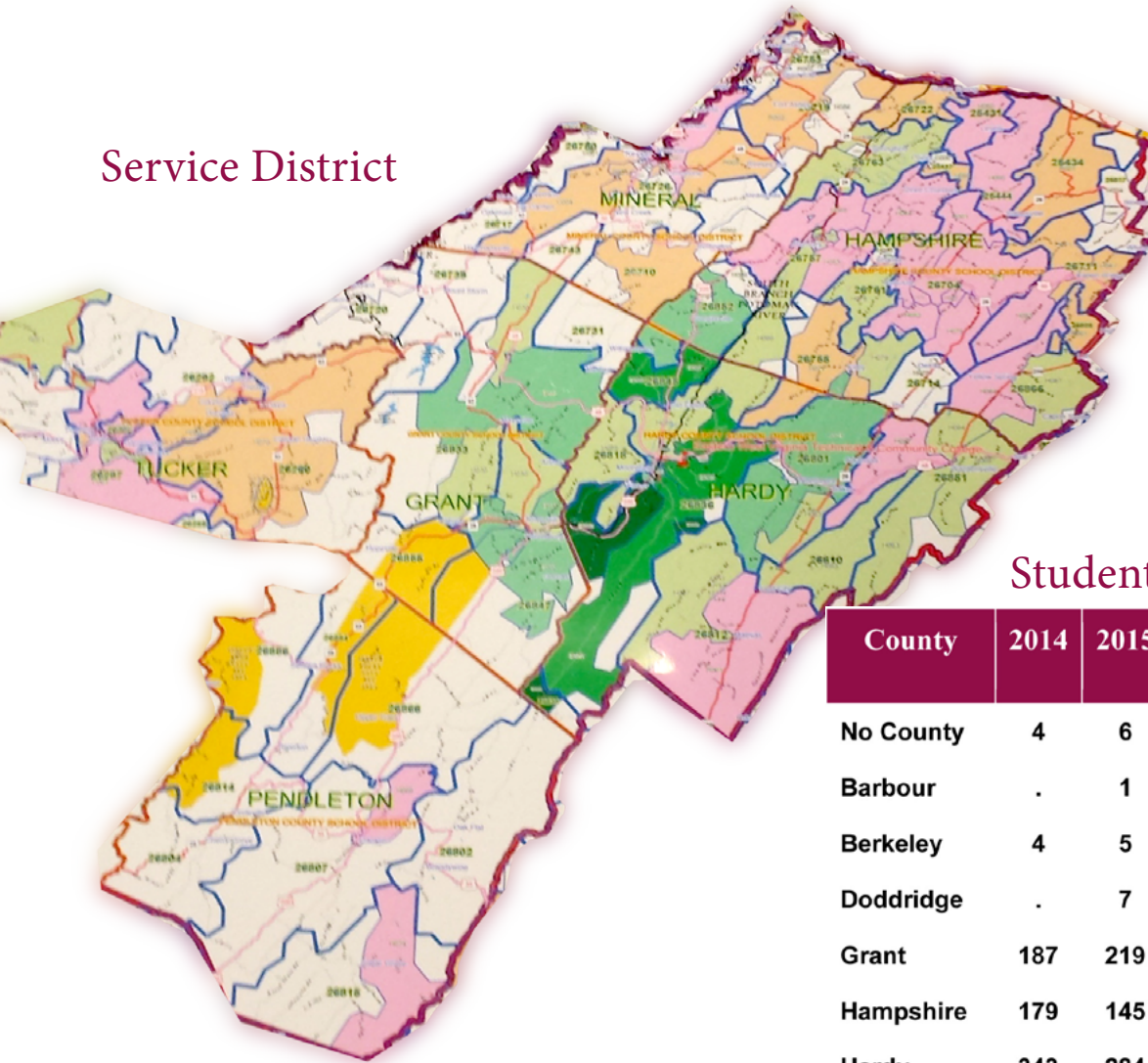
Certificate: 58.1%

Associate: 5.6%

Non-Degree: 36.3%

Level	2011	2012	2013	2014	2015	2014-2015 % Change	2011-2015 % Change
Associate's	459	463	497	492	437	-11.2%	-4.8%
Certificate	21	68	48	33	21	-36.4%	0.0%
Non-Degree	293	271	311	388	440	13.4%	50.2%

Service District



Student Residence

County	2014	2015	2014-2015 % Change	2011-2015 % Change
No County	4	6	50.0%	100%
Barbour	.	1	.	.
Berkeley	4	5	25.0%	150%
Doddridge	.	7	.	.
Grant	187	219	17.1%	19.7%
Hampshire	179	145	-19.0%	-11.6%
Hardy	343	284	-17.2%	18.3%
Jackson	.	1	.	.
Mason	2	3	50.0%	.
Mineral	50	38	-24.0%	35.7%
Monongalia	2	2	0.0%	.
Pendleton	78	79	1.3%	2.6%
Pocohontas	4	16	300%	.
Preston	.	1	.	.
Raleigh	1	1	0.0%	.
Randolph	1	11	1000%	83.3%
Roane	1	1	0.0%	.
Taylor	.	9	.	800%
Tucker	41	68	65.9%	54.5%



West Virginia Commission on the Arts hold meeting at Eastern.



Youth recognized at Welcome Back Event: Movie Night



40 & 8 presents scholarships to nursing students: Theresa Reel, Samantha Markwood, Heather Hinz, and Whitney Harper.



Delegates Listening Tour hosted at Eastern.



Dr. Ghee, president of West Virginia University visits Eastern on his 55 Counties Tour.



The winning team of Constitution Bowl 2014: Carla Hill, Shae Helmick, Dillion Riggelman, and Ryan Smith with moderator Robert 'Ben Franklin' Eagle.



Voices from the Earth Presentation by Ilene Evans as Memphis Tennessee Garrison, Diversity Grant



Ryan Zirk, Eastern student, painted and donated a portrait of Eastern's mascot "Easton."



West Virginia Community & Technical College System Chancellor James Skidmore was Keynote speaker at 2015 Commencement.



Dominion Power donates to Eastern's Technical Program.



4th Annual Eastern Center Stage Dance Recital



Matthew Persinger, Eastern student, demonstrates 3D printer capabilities at Wardensville Day.



Entrepreneurs Event featuring EJ Carrion.



Senator Joe Manchin visits Eastern's Main Campus for a Town Hall and tour of facilities.



Eastern Celebrates Appalachian Heritage, Diversity and Resiliency with a second performance of *Revelations*.



WQZK & The Wolf Live Broadcast at EWVCTC



Eastern Extravaganza Children Activities



2015 Commencement



First Female Wind Technician Graduates

316 Eastern Drive
Moorefield, WV 26836
Tel: 304-434-8000
Fax: 304-434-7000
E: ask@easternwv.edu